

# Android Enrolment Guide

Android Version: 7.0 | MobileIron Core | Mobile@Work Version: 9.6.0.3



Based on your company's mobility requirements, enrolling your device will allow you to access corporate apps, and/or receive email, contacts and calendars.

Please note that these instructions are based on a Samsung J3 device. Your device may not have the exact, but similar wordings or images.

## Prerequisites

**Email Address:** This is your corporate/work email address

**Network Credentials:** This is your network username and password used to log into internal corporate systems.

**Passcode:** If you have set a passcode on your mobile device you will need this to set a new passcode during the enrolment if the passcode doesn't meet the passcode policy set by your IT team.

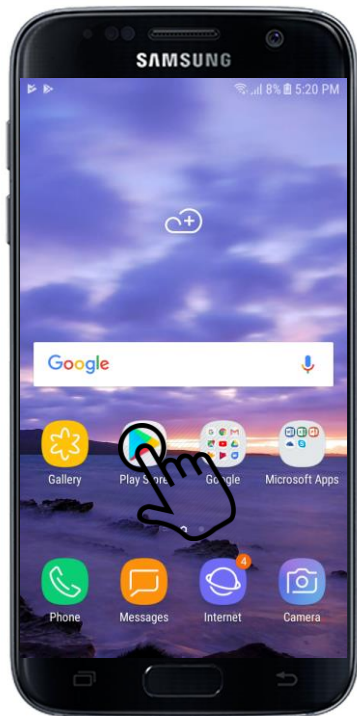
**Google Account:** In order to download the Mobile@Work app you will need to create a new google account. Click [here](#) to create a google account.

**Connectivity:** You will need an active 3G/4G or Wi-Fi connection

**Battery:** Ensure your device has been charged and has at least 50% of battery remaining to complete the enrolment

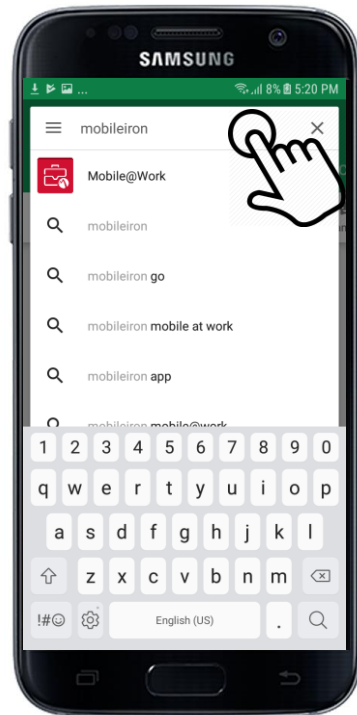


# Android MobileIron Core Enrolment Guide



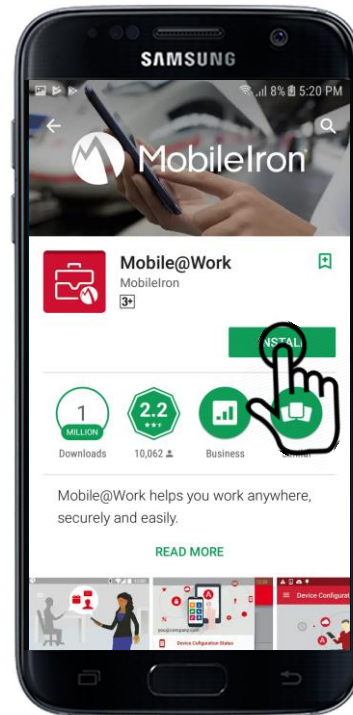
Step 1

Tap on the **Play Store** app



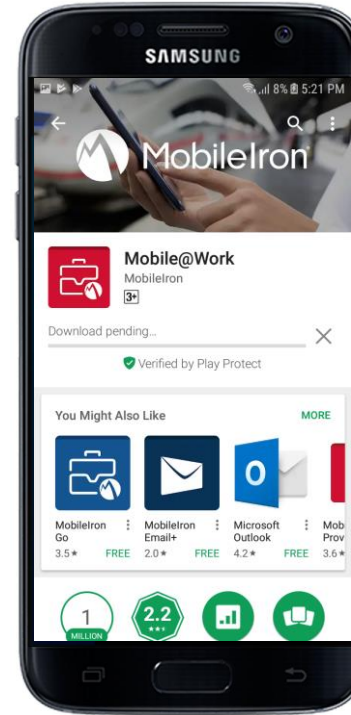
Step 2

Tap on the **search** icon at the top of the screen and search '**MobileIron**'. Select the **Mobile@Work**



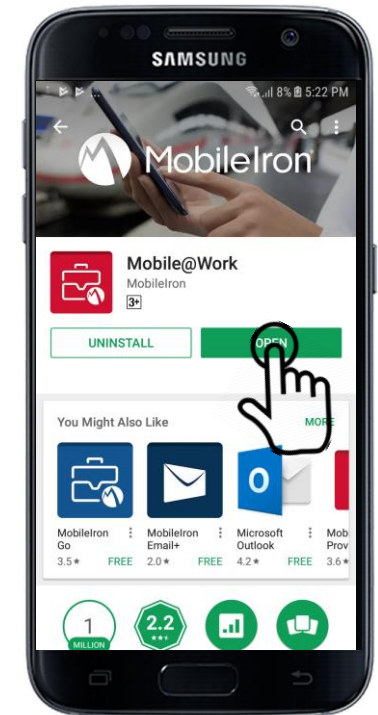
Step 3

Tap on **Install**



Step 4

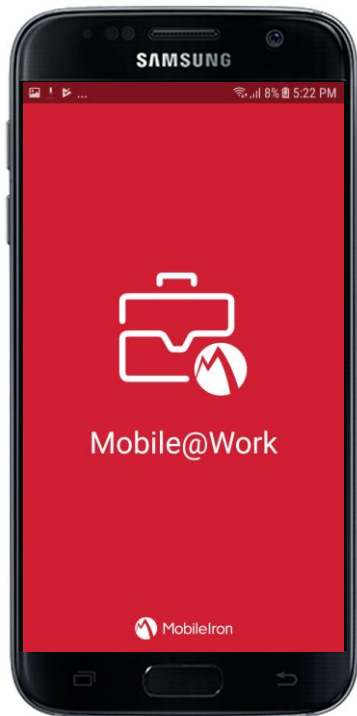
**Wait** while the **Mobile@Work** app installs



Step 5

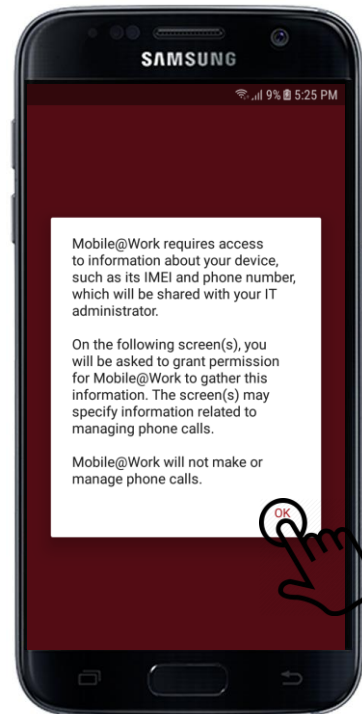
**Tap** on open once installed

# Android MobileIron Core Enrolment Guide



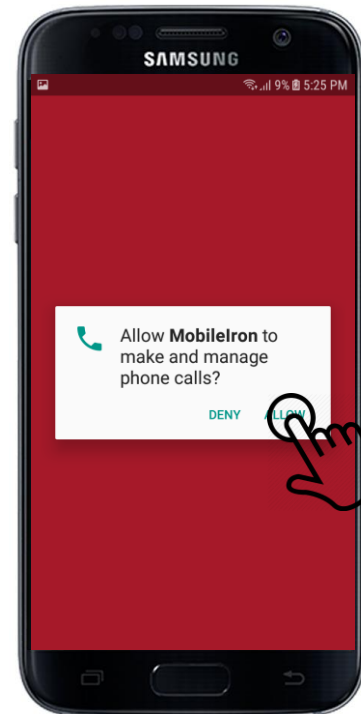
## Step 6

Wait few seconds for the app to load



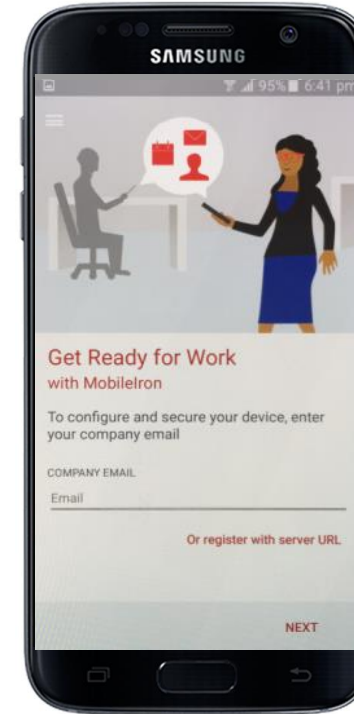
## Step 7

Read and tap **OK**



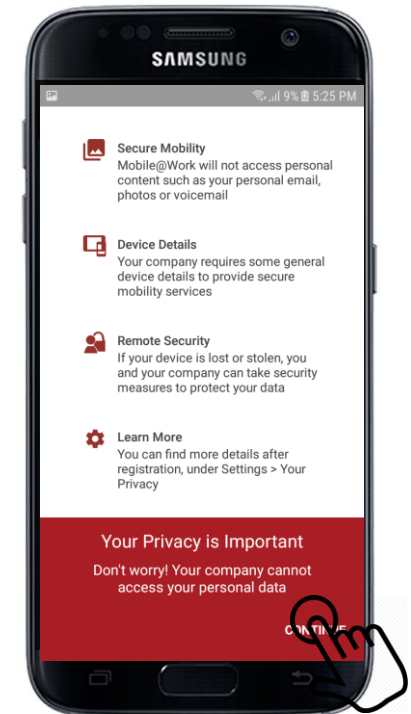
## Step 8

Tap **ALLOW**



## Step 9

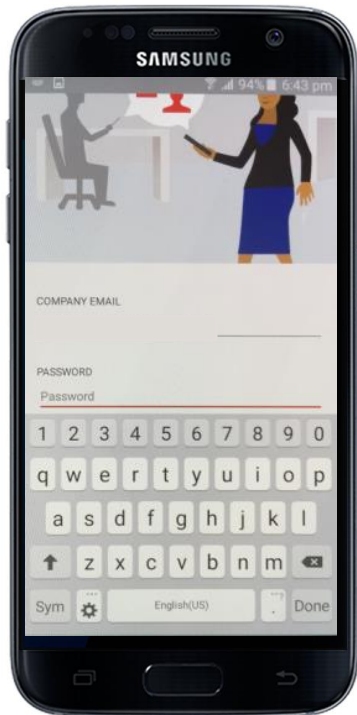
Enter your company E-mail address, then tap **NEXT**



## Step 10

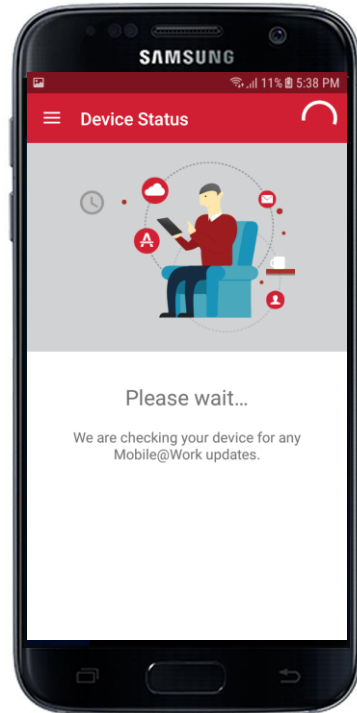
Tap **CONTINUE**

# Android MobileIron Core Enrolment Guide



## Step 11

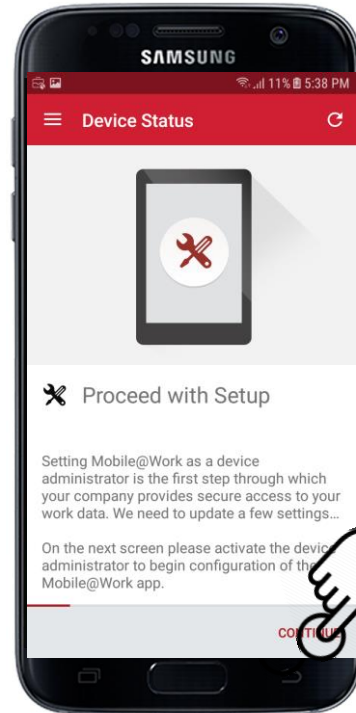
Enter your network password and then tap **Done**



## Step 12

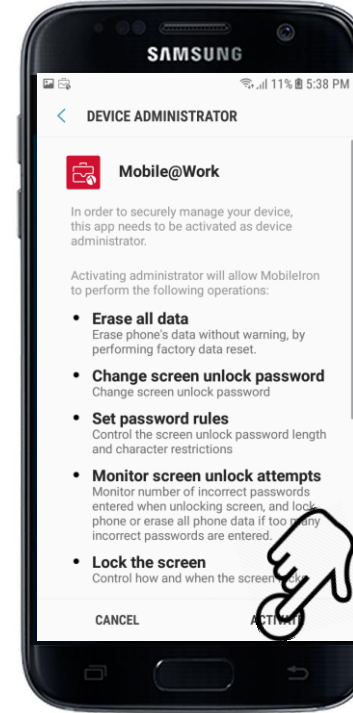


Wait while app checks for any updates



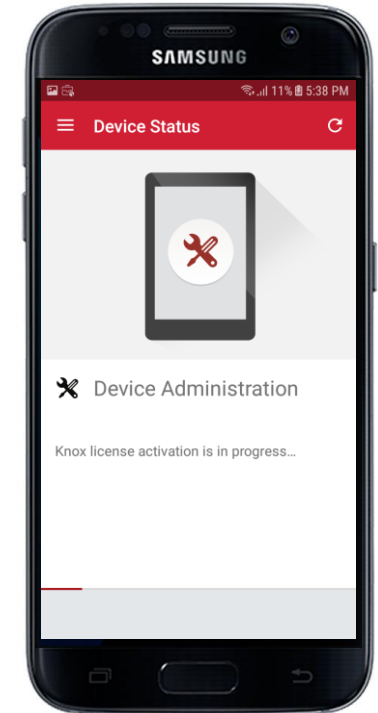
## Step 13

Tap **CONTINUE**



## Step 14

Tap **ACTIVATE**



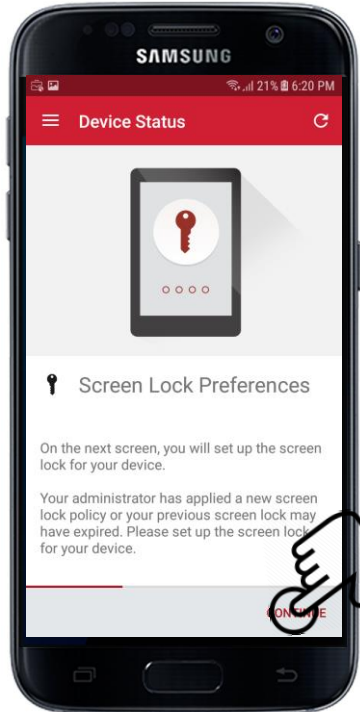
## Step 15



Please wait

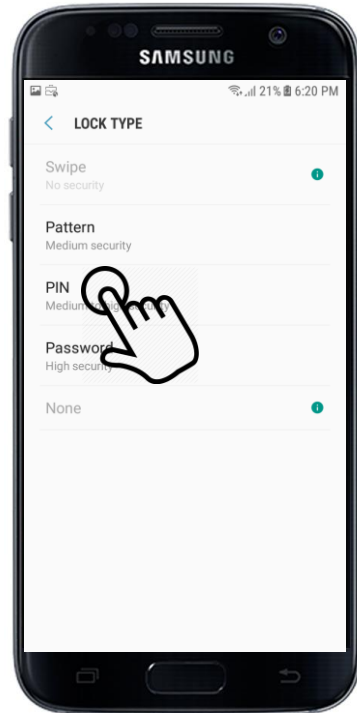


# Android MobileIron Core Enrolment Guide



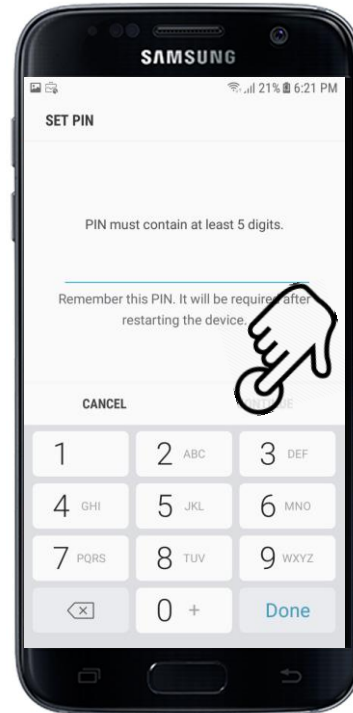
**Step 16**

Tap **CONTINUE**



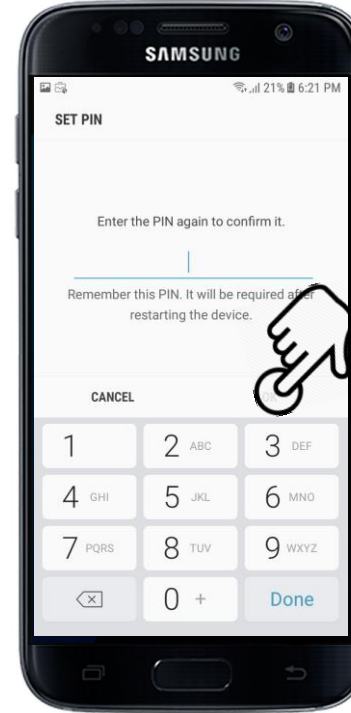
**Step 17**

Tap **PIN**



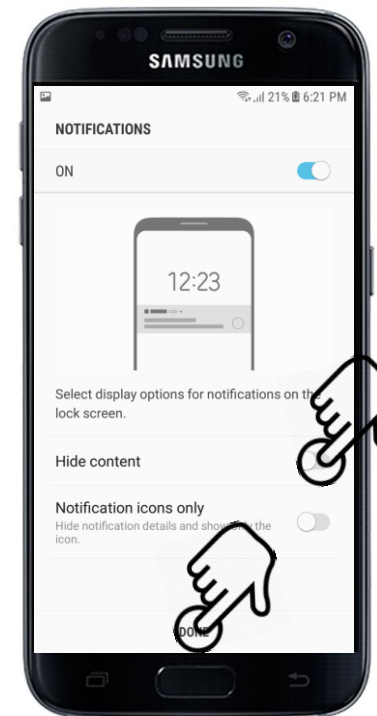
**Step 18**

Create a 5 digit device passcode then tap **CONTINUE**



**Step 19**

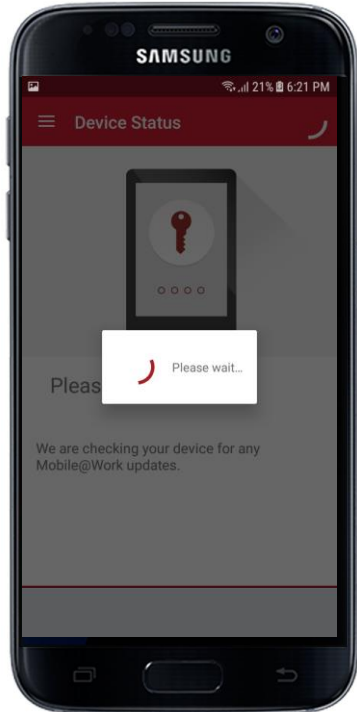
Confirm the passcode and then tap **OK**



**Step 20**

Tap **Hide content** then tap **DONE**

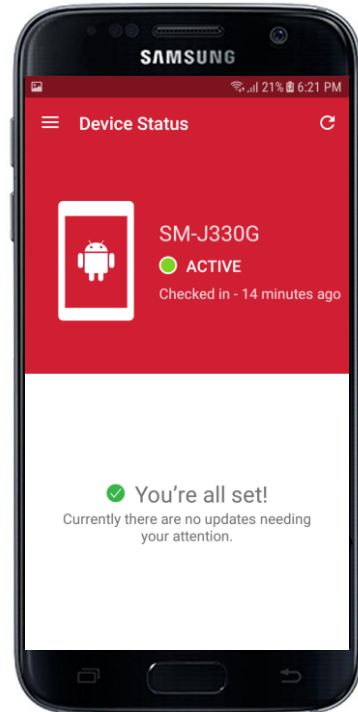
# Android MobileIron Core Enrolment Guide



**Step 21**



Wait while MobileIron retrieves your enterprise settings



**Step 22**

You have now completed the MobileIron Android enrolment



## Congratulations!

You have now completed the MobileIron enrolment.

If you require further support, please contact us on: [support@mobile-mentor.com](mailto:support@mobile-mentor.com)